

A

B

C

D

E

F

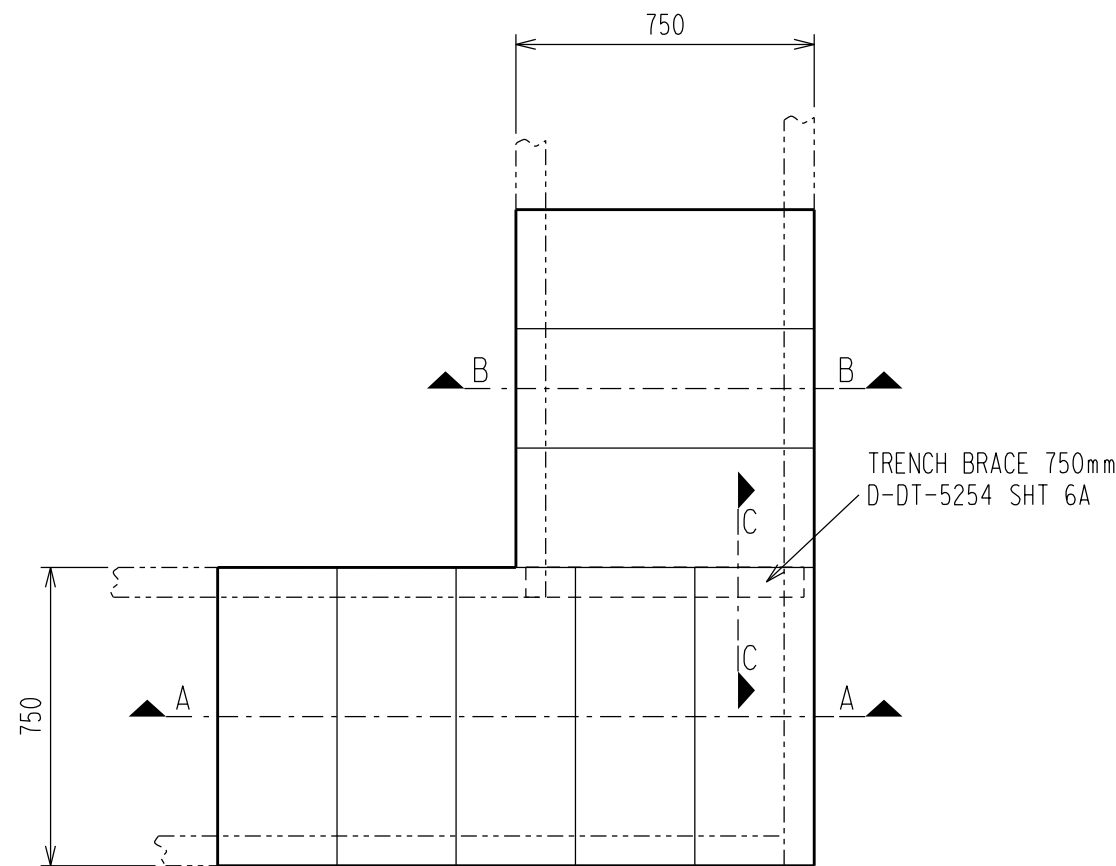
G

H

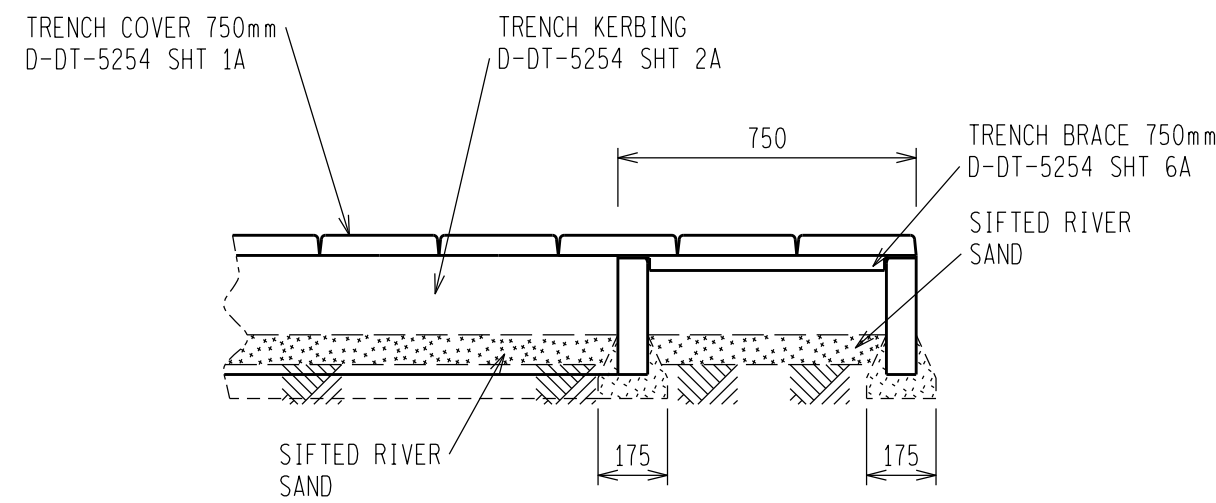
12123456789101112

NOTES:

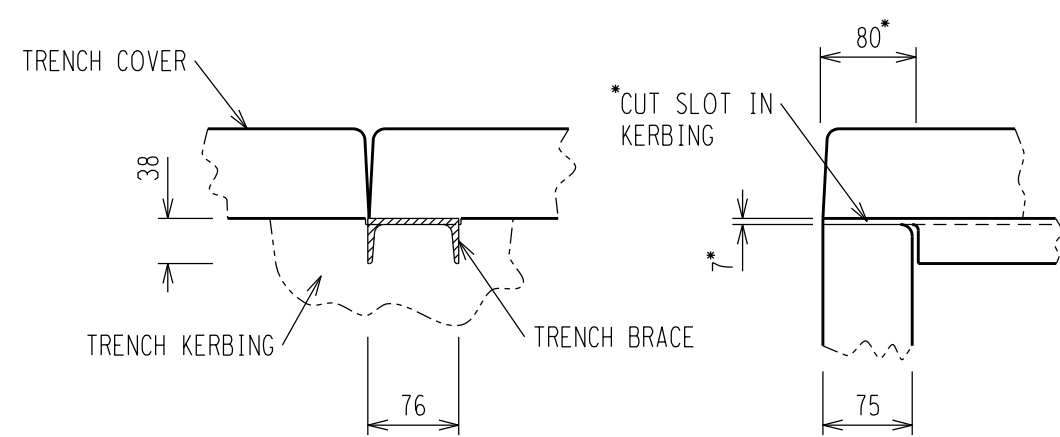
- 1 FOR 750mm TRENCH COVER SEE DRAWING D-DT-5254 SHT 1A.
- 2 FOR TRENCH KERBING SEE DRAWING D-DT-5254 SHT 2A.
- 3 FOR 750mm TRENCH BRACE SEE DRAWING D-DT-5254 SHT 6A.
- 4 TRENCH KERBING TO BE PLACED ON CONCRETE FOOTING AS PER DETAIL.
- 5 TRENCH KERBING TO BE INSTALLED WITH ROUNDED EDGE TO INSIDE OF TRENCH TO PREVENT CABLE DAMAGE.
- 6 TRENCHES MUST NOT BE USED AS WALKWAYS.



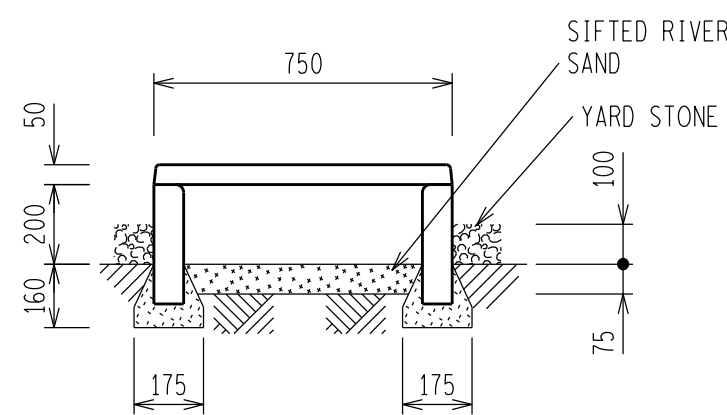
PLAN VIEW



SECTION A-A



SECTION C-C  
DETAIL OF CUT-OUT IN KERBING  
FOR KERBING BRACE  
(NTS)



SECTION B-B

D-DT-5254	SHEET 50	TRENCH 750 - CABLE TRENCH RAMP
D-DT-5254	SHEET 5N	TRENCH 750 - 'X' TO 750 - STRAIGHT 1500
D-DT-5254	SHEET 5M	TRENCH 1500 - 'X' TYPE A TO 1500
D-DT-5254	SHEET 5L	TRENCH 750 - 'X' TYPE B TO 750
D-DT-5254	SHEET 5K	TRENCH 750 - 'X' TYPE A TO 750
D-DT-5254	SHEET 5J	TRENCH 1500 - 'T' TO 1500
D-DT-5254	SHEET 5I	TRENCH 750 - 'T' TO 1500
D-DT-5254	SHEET 5H	TRENCH 750 - 'T' TYPE B TO 750
D-DT-5254	SHEET 5G	TRENCH 750 - 'T' TYPE A TO 750
D-DT-5254	SHEET 5F	TRENCH 1500 - 90 DEG TYPE A BEND
D-DT-5254	SHEET 5E	TRENCH 750 - 90 DEG TYPE B BEND
D-DT-5254	SHEET 5C	TRENCH 750 - STRAIGHT TO 1500
D-DT-5254	SHEET 5B	TRENCH 1500 - STRAIGHT
D-DT-5254	SHEET 5A	TRENCH 750 - STRAIGHT
DRG NO.	SHEET NO:	REFERENCE DRAWINGS:

THIS DRAWING IS THE NEW OFFICIAL REVISION AND IT SUPERSEDES ALL OTHER PUBLISHED DRAWINGS						
					/ /	
0	FIRST ISSUE				/ /	
REV	REVISION DESCRIPTION			BY	CHKD	AUTH
				DATE		PROJECT NO.
		SUBSTATION TRENCH 750mm WIDE - 90 DEGREE TYPE A BEND INSTALLATION AND SECTIONS				
SAP No.	DATE:	06/08/2014	D-DT-5254		SET	SHEET
SCALE 1:20	DRAWN:	G BEETGE				5D
THIS DRAWING IS THE PROPERTY OF ESKOM	DATE:	15/04/2014				0

12123456789101112A2L